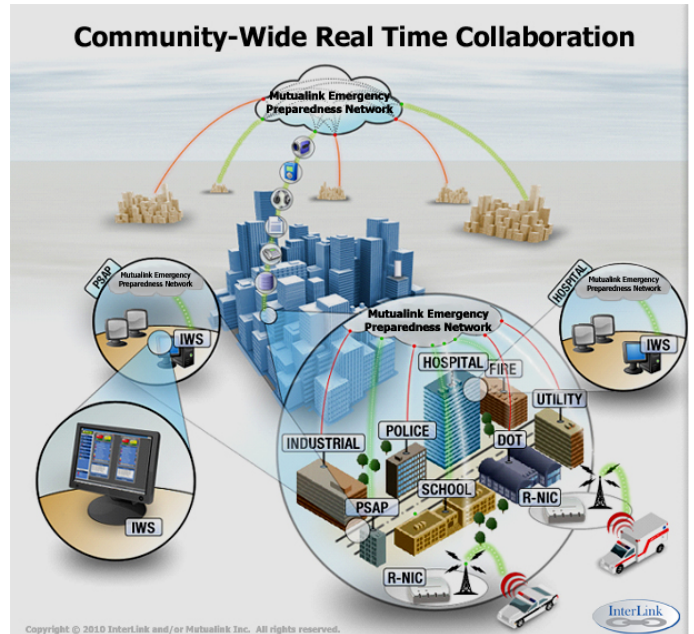


# Mutualink Emergency Preparedness Network

A  
Multimedia Platform  
for  
Realtime Collaboration,  
Communication, and  
Exchange of Information  
in the  
Management of Routine  
Incidents and Emergency  
Operations.



Mutualink greatly improves communications for anyone who handles emergencies or who may have an emergency.



The various components of the Mutualink network are designed to meet the communication needs of First Responders as well as other key entities, both for routine operations and in emergencies, all hazards, all disciplines.

Using innovative technology for the safe transmission of voice communications, video and text over public IP networks (Internet), Mutualink incorporates unprecedented interoperability to create a "virtual workspace," which can be extended to include all key resources.

Mutualink users have instant access to their own resources, to other agencies, to all key personnel and to external resources needed to handle an incident, while maintaining complete control over all information being exchanged.





## InterLink's Mutualink-related products include:

### Multimedia IP Gateway:

The Mutualink IP Gateway consists of a Mutualink Interoperability WorkStation (including processor, monitor, speakers, microphone, mouse, and network access provisioning), a Video adapter, a radio adapter, and a telephone adapter. The IP Gateway can be used as a base station for connections with other Mutualink MNET users (dispatch to dispatch). The IP Gateway is fully capable of initiating Mutualink MNET incidents or participating in incidents initiated by others upon being invited by an initiating agency. According to the guidelines of the National Incident Management System (NIMS), once in an incident, the IP Gateway user is on a par with all other users in the incident whether or not the user contributes resources to the incident. IP Gateway users therefore have equal access to the resources of others (video, radios, telephones, public address systems) that are brought into incidents by other parties whether or not the IP Gateway owner supplies resources of its own. If the IP Gateway user later chooses to purchase additional adapters for video, radios, telephones, public address systems, these devices will also be on par with all other devices whether purchased with the initial purchase (as is the case with adapters that are part of the initial configuration of the IP Gateway) or later.



### Standalone IWS:

This is a Standalone Interoperability WorkStation (SIWS) intended for use with or without associated local resources. The SIWS can be used as a base station for connections with other Mutualink MNET users (dispatch to dispatch). The SIWS is fully capable of initiating Mutualink MNET incidents or participating in incidents initiated by others upon being invited by an initiating agency. According to the guidelines of the National Incident Management System (NIMS), once in an incident, the SIWS user is on a par with all other users in the incident whether or not the user contributes to the incident. SIWS users therefore have equal access to the resources of others (video, radios, telephones, public address systems) that are brought into incidents by other parties whether or not the SIWS owner has resources of its own. If the SIWS user later chooses to purchase adapters for video, radios, telephones, public address systems, these devices will be on par with all other devices whether purchased with the initial purchase (as is the case with the Interoperability Gateway) or individually with the SIWS. An SIWS consists of a workstation, monitor, speakers, microphone, mouse, and network access provisioning.





## InterLink's Mutualink-related products include:

### LTE/Mobile Video:

This product consists of a Pelican Case containing an LTE aircard (modem), network access provisioning, a Video adapter, and an antenna. Its purpose is to provide streaming video from any mobile or remote site to the Mutualink MNet for viewing in Mutualink incidents. It can be configured for input from an analogue or an ip camera. It is suitable for deployment in helicopters, mobile vans, squad cars, boats, or other moving vehicles as well as remote fixed sites such as auditoriums, or other indoors or outside events as well as crime scenes. The product has received FCC clearance for use on any aircraft, but is effectively limited to helicopters due to the limitations of LTE towers which may have difficulty communicating with vehicles moving at ground speeds greater than 80 mph. The product can be deployed anywhere that LTE (4G) signals are available. If deployed on land or water 3G connectivity is also feasible. All traffic from the mobile device to the end user is encrypted using AES 256 encryption and is protected by a VPN tunnel. The product is powered by a single connection to a standard vehicular 12 volt power supply (cigarette lighter).



### LTE/Mobile Radio:

This product consists of a Pelican Case containing an LTE aircard (modem), a router, a Radio adapter, a Mobile Radio (UHF, VHF, 800 mhz, etc), an LTE antenna, and an RF antenna. Its purpose is to provide radio access from any mobile or remote site to the Mutualink MNet for communication to and from other radios in Mutualink incidents. This product is especially useful for users who must travel outside the coverage area of their base radio system. The product has received FCC clearance for use on any aircraft, but is effectively limited to helicopters due to the limitations of LTE towers which may have difficulty communicating with vehicles moving at ground speeds greater than 80 mph. The product can be deployed anywhere LTE (4G) signals are available. If deployed on land or water 3G connectivity is also feasible. All traffic from the mobile device to the end user is encrypted using AES 256 encryption and is protected by a VPN tunnel. The product is powered by a single connection to a standard vehicular 12 volt power supply (cigarette lighter).



10425 Cogdill Road, Suite 400  
Knoxville, Tennessee 37932

Ph: 865-671-4474  
Fax: 865-671-3533





## InterLink's Mutualink products include:

### Portable IWS:

This is a Portable Interoperability WorkStation (PIWS) intended for use with or without associated local resources. The PIWS can be used as a base station for connections with other Mutualink MNET users (dispatch to dispatch). The PIWS is fully capable of initiating Mutualink MNET incidents or participating in incidents initiated by others upon being invited by an initiating agency. According to the guidelines of the National Incident Management System (NIMS), once in an incident, the PIWS user is on a par with all other users in the incident whether or not the user contributes resources to the **Incident**. PIWS users therefore have equal access to the resources of others (video, radios, telephones, public address systems) that are brought into incidents by other parties whether or not the SIWS owner has resources of its own. If the PIWS user later chooses to purchase adapters for video, radios, telephones, public address systems, these devices will be on par with all other devices whether purchased with the initial purchase (as is the case with the Interoperability Gateway) or individually with the PIWS. A PIWS consists of a semi ruggedized computer workstation and network access provisioning.

